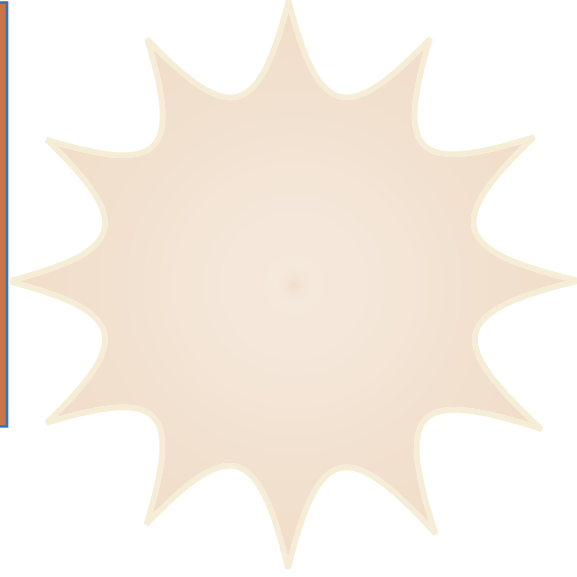


Why offer the Comfort Wall System to your homeowners?

Improve below grade livable space and increase the value of the home for your buyers. You are the first line of defense against rising energy costs and changing code compliance. As homeowners worry about the above grade insulation, heat and cold can be rushing out of a poorly insulated foundation. The Comfort Wall System reduces the risk and cost of energy loss, while the concrete also provides extra protection against moisture and insects.



comfort

wall system™

a better way to pour

Insulated Concrete Walls

only from Western Forms

Western Forms introduces an insulated concrete wall system that doesn't require special foam or additional hardware expenses.

Simply purchase the Comfort Wall System Studs and Corners, and then use standard aluminum form ties with your choice of foam from your local distributor!



Who needs an insulated concrete wall?

NORTHERN STATES - fight the cold while reducing heating costs.

SOUTHERN STATES - keep cool without breaking a sweat.

EVERYONE IN-BETWEEN - from ever-changing temperatures in the plains to the wet, rainy season in the northwest, there's no deciding between comfort and affordability.

“With a minimal cost, and one that’s much less than traditional ICF construction, I find I have a quicker selling product on the market. And, I get the best of both worlds with my brick forms because I can offer an insulated wall that is smooth on the inside and maintains the brick pattern on the outside. Choosing the Comfort Wall System is a no-brainer.”

**WADE SMITH
STONEFIELD CONSTRUCTION
CUMMING, IA**

Western Forms, Inc.
6200 Equitable Road
Kansas City, MO 64120





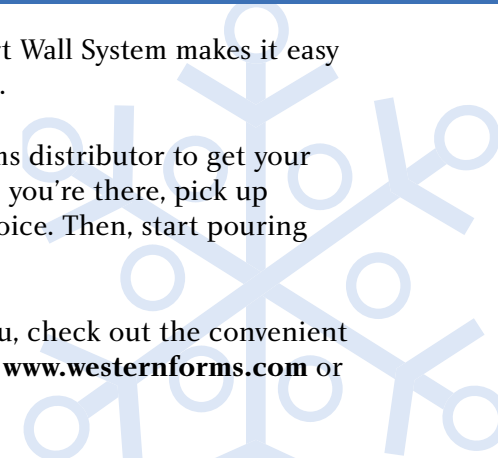
Not too hot, not too cold, and the installation is just right.

Ready to try it?

The simplicity of the Comfort Wall System makes it easy to purchase, pour, and profit.

Visit your local Western Forms distributor to get your studs and corners, and while you're there, pick up the foam and ties of your choice. Then, start pouring Insulated Concrete Walls!

To find a distributor near you, check out the convenient distributor listings online at www.westernforms.com or call 800-821-3870.



Introducing

Discover the Comfort Wall System from Western Forms. You now have an insulation option that installs quickly and easily, from the leader in poured wall technology. Offer your homeowners an energy-efficient foundation designed for comfort, savings, and longevity whether it's battling freezing winds or soaring temperatures.

Simply Superior

With the Comfort Wall System you get superior insulation with less time, effort, and cost than traditional insulated concrete forms (ICF), wood framing, and other insulated concrete wall (ICW) systems.

Set up is easy and requires little training to achieve maximum results. Installation happens at the same time the wall forms are erected, using your own, familiar hardware and labor. Why wait for additional subcontractors to arrive, or order special, costly parts, when one crew can do the entire foundation process seamlessly?

Energy Efficient

With just 2" of foam, you can increase your energy R-Value from 2.5 to 11.5. Choose to place foam on both sides of the concrete and achieve an R-Value up to 20.5.

- Concrete Only R 2.5
- Concrete + 2" Insulation, one side R 11.5
- Concrete + 2" Insulation, both sides R 20.5

Photo Finish

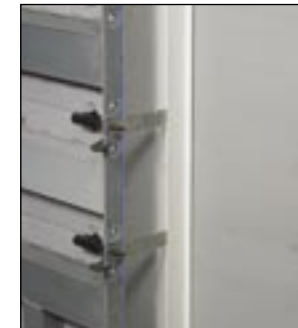
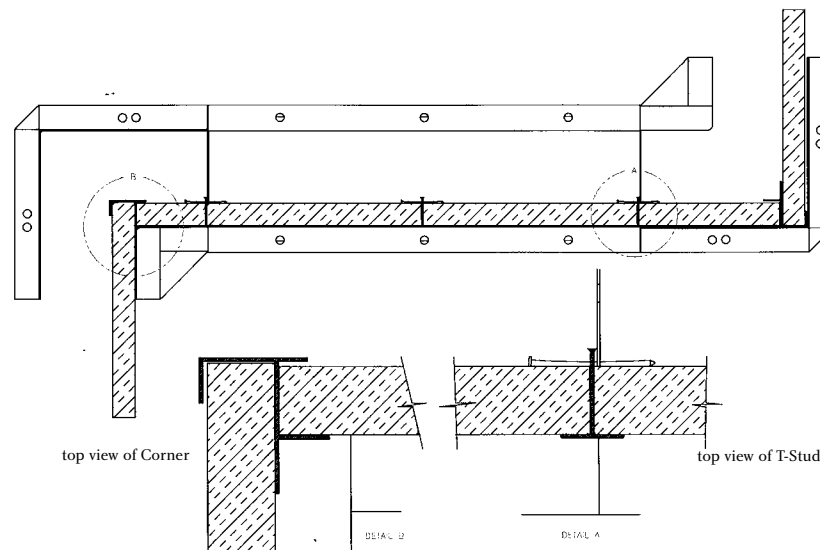
Your walls are ready for a beautiful finish with your choice of drywall, siding, paneling, or even stucco. The Comfort Wall System corners and studs provide easy installation of most finishing materials. Drywall can be installed with conventional drywall screws.

Cost-Effective

Reduce materials, labor, and subcontractor costs with the Comfort Wall System.

"Our customer asked us to provide an insulated basement and we were surprised at how well the system worked the first time. We insulated both sides of the wall and it looked great. Our builder even mentioned that it was cheaper than using Styrofoam® blocks (ICFs). Plus, the measurements are more accurate than Styrofoam® walls. Our customer was very happy and we'll definitely use the Comfort Wall System again."

KEVIN KELLY
 KEVIN KELLY POURED FOUNDATIONS
 GERMANTOWN, NY



T-Stud with ties, before foam placement



T-Stud with foam and nails



Top view of corner w/foam



Straight view of corner w/foam

