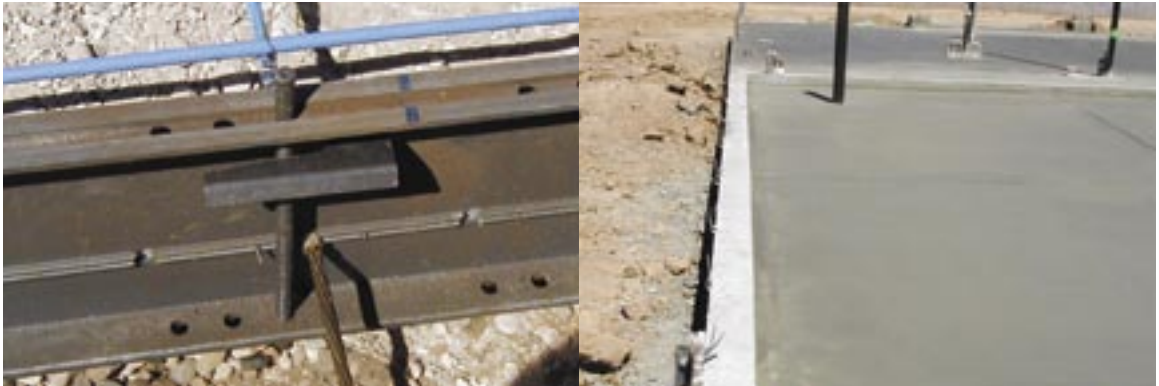


Western Forms Post-Tension Slab Aluminum Forming System



more INFORMATION

Discover how you can start pouring better post-tension slabs with aluminum today!

Contact your local Western Forms representative for more information and pricing.

T: 800.821.3870
F: 816.241.6877
E: info@westernforms.com
W: www.westernforms.com



anything
WOOD can do
YOU can do
better



Western Forms Post-Tension Slab Aluminum Forming System

Stop cutting lumber for every job! Save time and save money by choosing a reusable, superior, cost-effective aluminum forming system.

For years, contractors have used old-fashioned wood forms to create a post-tension slab with mixed results. The time and expense involved with purchasing lumber on a regular basis with unpredictable costs and availability could restrict cash flow and company growth. The fluctuation in form performance did not allow a guarantee of a superior slab with each pour. The limited technological advancements in wood-formed slabs reduced a contractor's ability to explore new methods and cost savings.

Now there's a new way, a *better* way, to pour a smooth, consistent, cost-effective post-tension slab.



INTRODUCING

The Western Forms Post-Tension Slab Aluminum Forming System

What is it?

This new advancement in slab forming incorporates the consistent, preferred finish and cost-effective construction method of aluminum form panel systems with a design developed exclusively for efficient, quality post-tension slab production.

How does it work?

Using the same layout principles as wood systems, the aluminum form panels are placed to frame the slab pour. Each panel contains a series of 13/16" diameter cable holes spaced 6" apart (meets most codes for cable spacing), eliminating the need for custom drilling at each project and enhancing the versatility of the system.



How is it better?

Attaching your post-tension brackets is easier with our exclusive patent-pending technology. Steel wire rods lock in each nail to prevent cable movement and ensure a firm hold to the form. It's faster to set up than "toenailing" on wood and provides a more secure grip for your cable.

How do you benefit?

Aluminum forms are dependable, have a faster cycle time, and offer you a better finish with a straighter edge for a higher quality product. Over time, aluminum form panels cost you less while holding their value. Your system becomes an investment in your company's future, not simply an expense. Spend time on more projects instead of wasting it purchasing and cutting wood forms year after year.

Increase your productivity. Increase your quality. Increase your profits.

Why choose the Western Forms Post-Tension Slab Aluminum Forming System?

- Reusable
- Improves Cycle Time
- Lightweight
- Long-Lasting
- Requires Minimal Bracing
- Provides Better Finish
- Versatile
- Cost-Effective

